

1.

- (1) (ア)  $\text{Fe}(\text{OH})_2$  (イ) 配位 (ウ) 高い (エ) 水素  
 (2) (オ)  $-2.06 \times 10^2$  (カ)  $4.12 \times 10$  (キ)  $\text{KHCO}_3$  または  $\text{HCO}_3^-$   
 (3) (ク) c (ケ)  $4.5 \times 10^7$  (コ)  $5.8 \times 10$  (サ) 1.5

2.

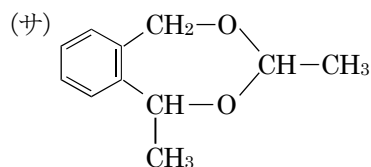
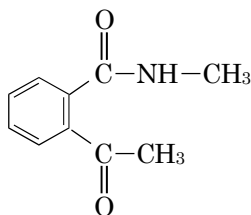
- (1) (ア)  $\text{S}_8$  (イ)  $\text{SO}_3$  (ウ) 発煙硫酸 (エ) 接触法 (オ)  $5.5 \times 10^{-1}$  (カ)  $7.8 \times 10^{-3}$   
 (2) (キ) ファンデルワールス (ク) 4 (ケ) 2.3 または 2.4 (コ)  $3.7 \times 10^{-1}$  (サ)  $2.0 \times 10$

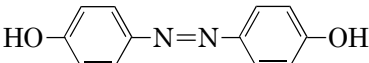
3.

- (1) (ア)  $\begin{array}{c} \text{CH}_2-\text{CH}-\text{CH}_2 \\ | \quad | \quad | \\ \text{OH} \quad \text{OH} \quad \text{OH} \end{array}$  (イ)  $1.36 \times 10^2$  (ウ)  $\text{C}_{18}\text{H}_{30}\text{O}_2$

- (2) (エ) アジピン酸 (オ) 縮合 (カ)  $2.56 \times 10^4$

- (3) (i) (キ)  $\text{C}_{10}\text{H}_{11}\text{NO}_2$  (ク)  $\text{CHI}_3$  (ケ)



- (ii) (シ) メタクリル酸 (ス)
- 
- The structure shows two benzene rings connected by an oxygen atom at the 4-positions, with amino groups (-NH<sub>2</sub>) at the 1-positions.

